

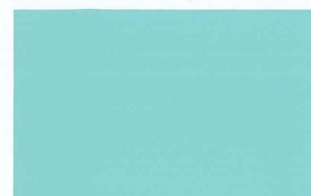
Paynt

PAYNTGUARD 1000
HIGH GLOSS
FINISH



PAYNTGUARD 1000

HIGH GLOSS FINISH



Sky Blue

1030



Silver Mist

1093



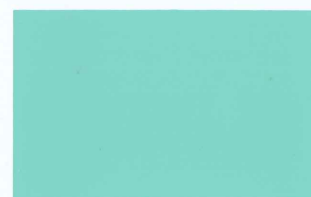
Golden Honey

1627



Neptune

1031



Tanjung

1032



Pewter

1095



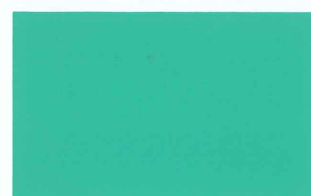
Golden Brown

1044



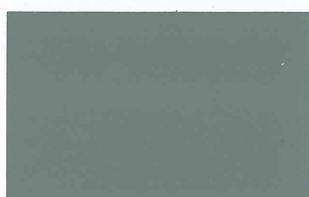
Marine Blue

1649



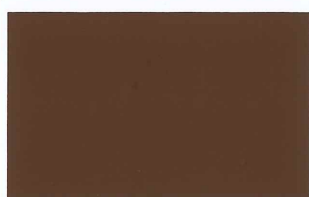
Pangkor

1413



Executive Grey

1604



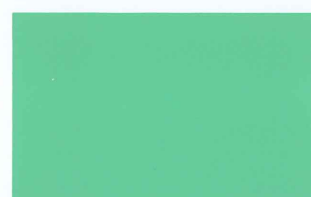
Antique

1045



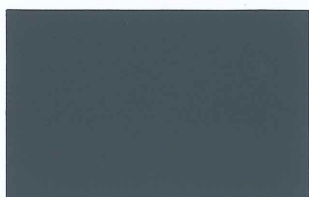
Regal Blue

1013



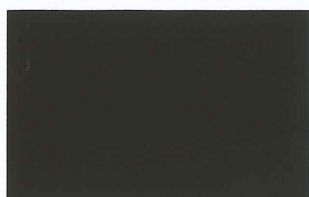
Opal Green

1622



Steel Grey

1097



Leather

1037



Wira Blue

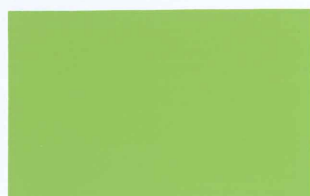
1227



Petronas Green

1680





Mirage 1060



Precious Pink 1628



Celebration 1504



Sunset 1188



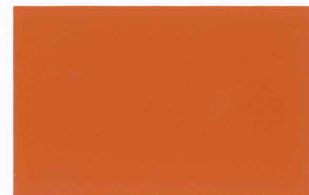
Tropicana 1253



Evening Glow 1619



Primrose 1053



Sun Rise 1004



Apple Green 1638



Lilly 1146



Sunrise Yellow 1669



Paprika 1023



Conifer 1339



Ivory 1130



Jasmine 1055



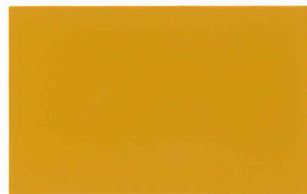
Signal Red 1437



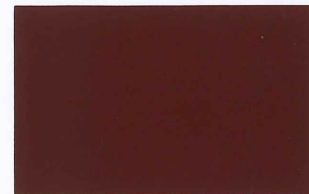
Spruce 1074



Magnolia 1033



Chrome Yellow 1003



Maroon 1024

- The colours on this card are as close to the actual paint colours as modern printing techniques will allow.
- Available in 1 litre & 5 litres.
- Available in White 9102, Black 9103, Aluminum and Clear.
- Available in White Matte & Black Matte.

METAL PRIMER



Grey Green



Black Oxide



Red Oxide

- Also available in ZC & ZP White Metal Primer



Physical Data

Finishing	: High Gloss
Theoretical coverage	: Approx. 12.5 m ² /liter (± 50 micron)
Drying time	: Touch dry : ≤ 1 hour Hard dry : ≥ 4hours
Coating Layers	: 2 Coatings (advisable)
Recoating Interval	: ≥ 2 hours
Dilute Method	: Thinning no more than 5% with thinner if desired.

How to Apply the Paint

Surface preparation:

New surface: Surfaces must be clean, dry and free of all loose, dirt, dust, oil stain and other contaminants before paint application. Surface affected by rust must be thoroughly cleaned and primed with PayntGuard ZC Primer or ZP Primer before finishing coat.

Painted surface: For a strong preceding coat, light sanding is recommended. Meanwhile for a weak preceding coat, total removal of the coat is highly recommended. Then surface must be thoroughly cleaned, dried and free of all loose, dirt, dust, oil stain and other contaminants before paint application.

Note: Proper surface preparation is highly recommended for best finishing outcome.



Manufactured by

Paynt

PAYNT (M) SDN. BHD 587253-H

No.8, Lorong Abdul Manan 1 Batu 5 1/2 Off Jalan Meru 41050 Klang Selangor Malaysia

Tel: 603-3392 9161 Fax: 603-3392 3885 Email: payntmsb@gmail.com Web: www.paynt.com.my